

GEOGRAPHIC INFORMATION SYSTEM (GIS)

Complete NG9-1-1 Data Transition and Management

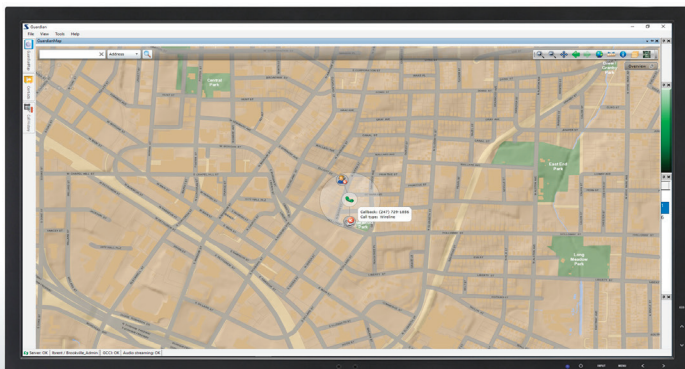
Collect, store,
and deliver data
in a consistent
manner.

Make the move to next-generation call routing, validation, and handling with Solacom's end-to-end Geographic Information System (GIS) services.

Our worry-free database development, standardization, and maintenance services simplify the transition to new data standards and ensure your location-based information meets new benchmarks for uniformity, accuracy, and timeliness.

Optimize Geospatial Data for NG9-1-1

Solacom's complete GIS services optimize your emergency call data for use by the Emergency Call Routing Function (ECRF) and Location Validation Function (LVF) in NG9-1-1 systems. With these services, you can ensure that critical geospatial data is collected, stored, and delivered in a consistent manner to a Solacom **Guardian Call Handling** solution — the most flexible multimedia emergency call management solution for public safety answering points (PSAPs).



SOLACOM

A Subsidiary of
Comtech Telecommunications Corp.

Plan for Success

Start your transition to NG9-1-1 GIS data with our data assessment and strategic planning services.

Our data assessment service is structured to test and identify areas where existing GIS data does not meet National Emergency Number Association (NENA) NG9-1-1 standards by testing for:

- Duplicate features and records
- Invalid geometry
- Road name inconsistencies
- Missing metadata based on the Federal Geographic Data Committee (FGDC) standard
- Domain validation
- Discrepancies between address point information and road centerline information
- Projection inconsistencies
- Road splits at intersections and boundaries
- Boundary misalignments
- Multi-address structure formats

Based on this complete understanding of your current status, our strategic planning service:

- Identifies changes that should be made
- Defines goals and objectives
- Establishes a realistic timeline for your transition to current standards

Simplify the Transition Process

With an actionable transition plan, your IT team will be in a better position to bring your GIS data into compliance, or you can rely on our experienced team of GIS specialists to manage the transition for you.

Our data standardization and remediation services are structured to convert existing data to either the current

To find out more, contact:

CST-Sales@comtechtel.com

Call Toll Free: **1 (888) SOLACOM (765-2266)**

Call Direct: **1 (819) 205-8100**

Visit: **www.solacom.com**

Copyright © 2019.

NENA GIS data standard or to your state's NG9-1-1 data standard. These end-to-end services include:

- Data content standardization
- Detection and correction of attribute and geometry errors
- Creation of missing GIS data layers required for NG9-1-1
- Addition of mandatory required data in the existing map layers

Maintain Compliance

Once you have made the move to current standards, you will want to ensure your PSAP is always compliant. Solacom offers worry-free data maintenance services for ongoing additions, changes, and deletions to the GIS database based on a predetermined schedule that fits with the way you work. This ensures that you can continue managing daily operations, without having to worry about database maintenance.

Partner With an Industry Innovator

At Solacom, public safety communications management is not a sideline, it's our single focus. Our user-centric, multimedia 9-1-1 call handling and management solutions are built on more than 30 years of research and innovation in the application of advanced hardware and software technologies for public safety.

Today, our 9-1-1 solutions support thousands of agencies affecting millions of lives annually. From dense urban environments to statewide deployments, our solutions are trusted to streamline 9-1-1 call handling and management processes and enable more efficient collection of critical information in emergency situations.

Solacom is a subsidiary of Comtech Telecommunications Corp.

SOLACOM

A Subsidiary of
Comtech Telecommunications Corp.