

SmartResponse™ combines the most accurate location data available, with caller information, live traffic, weather, routing, POIs, and DOT camera feeds in a single Common Operating Picture (COP) and it is GIS data agnostic.

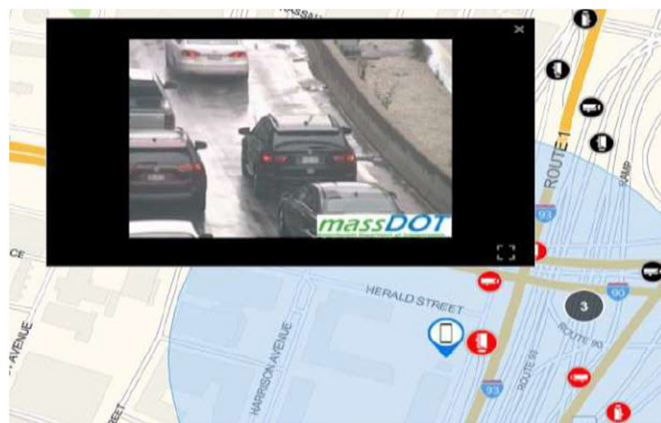
SmartResponse™ is designed to meet the demanding needs of today's emergency communication centers, empowering communication professionals with accurate information, and improve response times and performance.

The **SmartResponse™** solution leverages multiple components that can be configured to address specific needs. Each component can be used individually or as a powerful solution together:

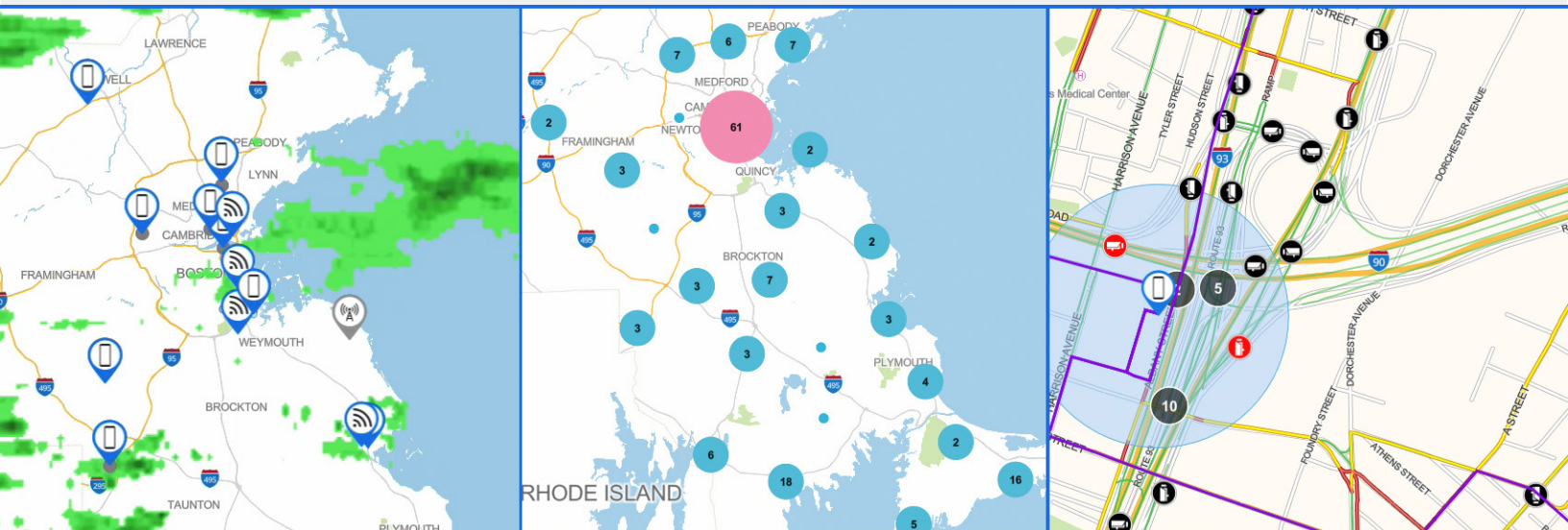
SmartResponse™ Situational Awareness Portal

SmartResponse™ Maps

SmartResponse™ Maps Portal



- Cloud native architecture and deployment
- Flexible integration interfaces with nearly any call handling or CAD system
- Intuitive geospatial interface
- Live traffic, routing, weather, DOT cameras and more
- Criminal history, residence information, AEDs



SmartResponse™ Situational Awareness Portal

- Customizable views and map styles
- GIS data agnostic: ESRI, Mapbox, Open Street Maps and others
- Powerful search functionality
- Eliminates the need for multiple screens
- Real-time incident views
- Analytics and heat mapping
- Flexible integration with 911, CAD, and more

SmartResponse™ Maps

- Uses Comtech's Trusted OpenStreetMaps (TOSM) maps offering rich and updated content
- Supports configurable views such as day, night, or satellite
- Customize content unique to operational needs
- Support for GIS data sources to display custom content such as police, fire, EMS jurisdiction, local maps, and more

SmartResponse™ Map Portal

- Account provisioning
- Full design control
- Import custom maps
- Customize existing and imported content
- Full control of access and content
- Ability to update independently

[Contact Comtech](#) today to learn about what SmartResponse™ can do for your PSAP.

About Us

The Trusted Location group of Comtech Telecommunications Corp. is a leading provider of precise device location, mapping, public safety, and messaging solutions. Sold around the world to mobile network operators, government agencies, and Fortune 150 enterprises, our platforms allow you to locate, map, track, and message.

275 West Street
Annapolis, MD 21401 USA
Toll Free: 1.800.557.5869
Outside US: +1.410.263.7616
www.comtechlocation.com